



**Common Land Unit** Tract Boundary

- Non-Cropland
- Cropland

**Wetland Determination**

- Restricted Use
- Limited
- Exempt from Conservation Compliance Provisions

All of the following are true unless otherwise indicated:  
 All Crops=NI All Crops=GR  
 Corn=YEL Soybeans=COM  
 Wheat=SRW

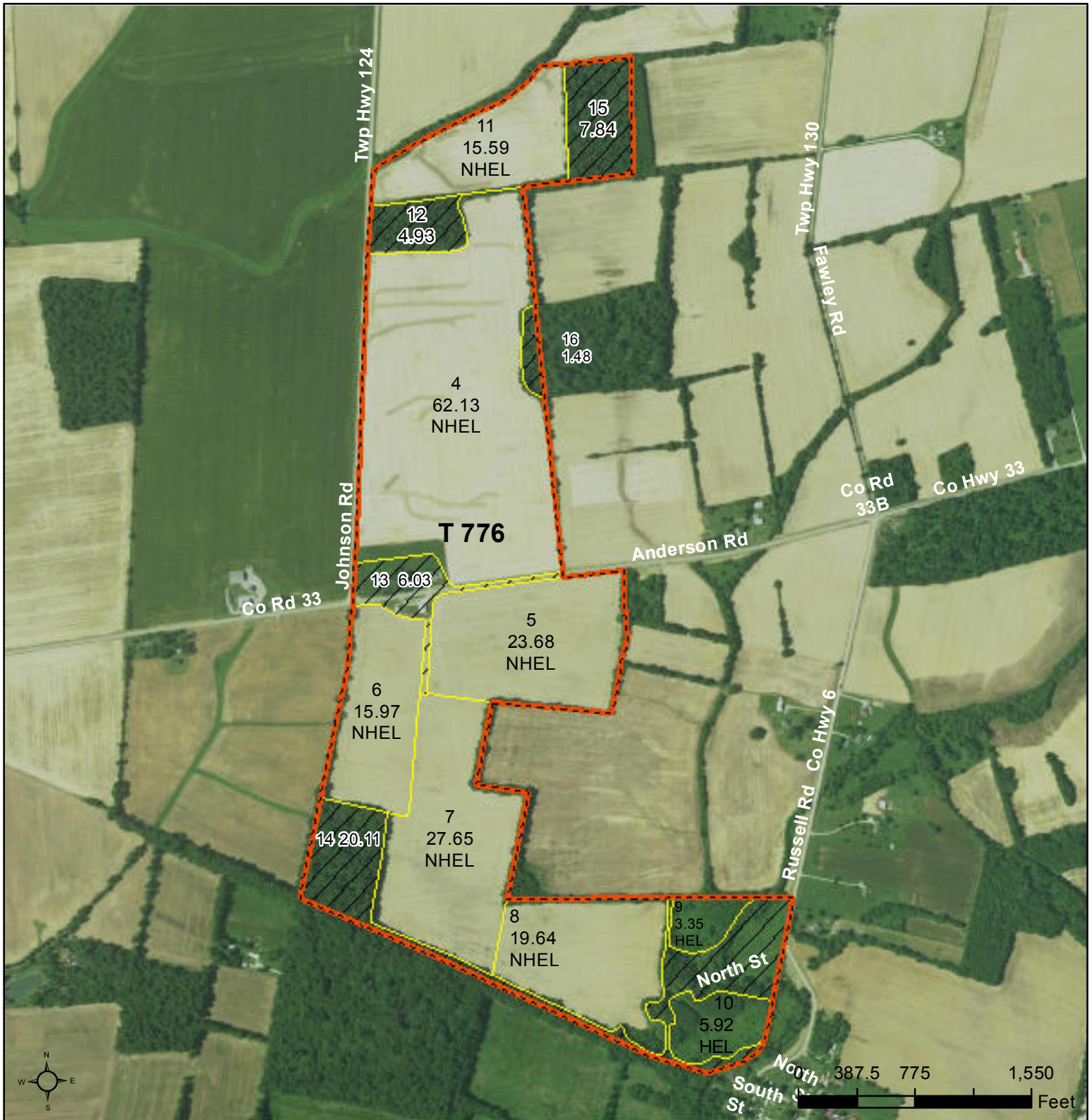
Highland County Farm Service Agency  
 514 Harry Sauner Rd - Suite 4  
 Hillsboro, OH 45133  
 937-393-1921 (p)  
 855-835-8354 (f)

**2018 Program Year**  
 Map Created February 28, 2018

**Farm 2539**  
**Tract 775**

**Tract Cropland Total: 69.47 acres**

United States Department of Agriculture (USDA) Farm Service Agency (FSA) maps are for FSA Program administration only. This map does not represent a legal survey or reflect actual ownership; rather it depicts the information provided directly from the producer and/or National Agricultural Imagery Program (NAIP) imagery. The producer accepts the data 'as is' and assumes all risks associated with its use. USDA-FSA assumes no responsibility for actual or consequential damage incurred as a result of any user's reliance on this data outside FSA Programs. Wetland identifiers do not represent the size, shape, or specific determination of the area. Refer to your original determination (CPA-026 and attached maps) for exact boundaries and determinations or contact USDA Natural Resources Conservation Service (NRCS).



**Common Land Unit** Tract Boundary

- Non-Cropland
- Cropland

**Wetland Determination**

- Restricted Use
- Limited
- Exempt from Conservation Compliance Provisions

All of the following are true unless otherwise indicated:  
 All Crops=NI All Crops=GR  
 Corn=YEL Soybeans=COM  
 Wheat=SRW

Highland County Farm Service Agency  
 514 Harry Sauner Rd - Suite 4  
 Hillsboro, OH 45133  
 937-393-1921 (p)  
 855-835-8354 (f)

**2018 Program Year**  
 Map Created February 28, 2018

**Farm 2539**  
**Tract 776**

**Tract Cropland Total: 173.93 acres**

United States Department of Agriculture (USDA) Farm Service Agency (FSA) maps are for FSA Program administration only. This map does not represent a legal survey or reflect actual ownership; rather it depicts the information provided directly from the producer and/or National Agricultural Imagery Program (NAIP) imagery. The producer accepts the data 'as is' and assumes all risks associated with its use. USDA-FSA assumes no responsibility for actual or consequential damage incurred as a result of any user's reliance on this data outside FSA Programs. Wetland identifiers do not represent the size, shape, or specific determination of the area. Refer to your original determination (CPA-026 and attached maps) for exact boundaries and determinations or contact USDA Natural Resources Conservation Service (NRCS).



**Common Land Unit** Tract Boundary

- Non-Cropland
- Cropland

**Wetland Determination Identifiers**

- Restricted Use
- Limited Restrictions
- Exempt from Conservation Compliance Provisions

All of the following are true unless otherwise indicated:  
 All Crops=NI All Crops=GR  
 Corn=YEL Soybeans=COM  
 Wheat=SRW

Highland County Farm Service Agency  
 514 Harry Sauner Rd - Suite 4  
 Hillsboro, OH 45133  
 937-393-1921 (p)  
 855-835-8354 (f)

**2019 Program Year**  
 Map Created February 27, 2019

**Farm 11035**  
**Tract 785**

**Tract Cropland Total: 65.14 acres**

United States Department of Agriculture (USDA) Farm Service Agency (FSA) maps are for FSA Program administration only. This map does not represent a legal survey or reflect actual ownership; rather it depicts the information provided directly from the producer and/or National Agricultural Imagery Program (NAIP) imagery. The producer accepts the data 'as is' and assumes all risks associated with its use. USDA-FSA assumes no responsibility for actual or consequential damage incurred as a result of any user's reliance on this data outside FSA Programs. Wetland identifiers do not represent the size, shape, or specific determination of the area. Refer to your original determination (CPA-026 and attached maps) for exact boundaries and determinations or contact USDA Natural Resources Conservation Service (NRCS).